

PART OF SECTIONS 19 & 20, T.6N., R.1W., S.L.B. & M.

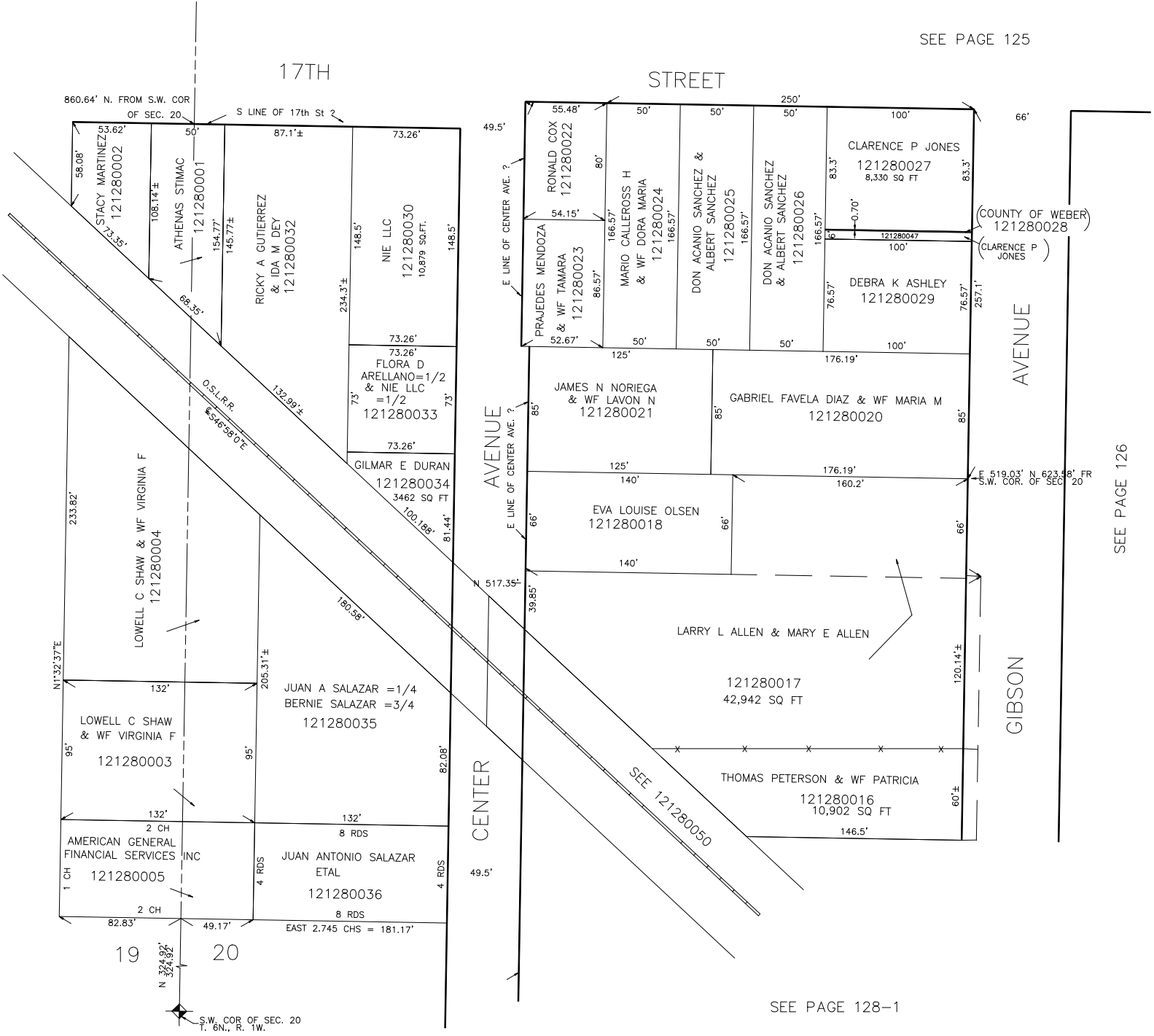
IN OGDEN CITY  
SCALE 1" = 50'

TAXING UNIT: 25

SEE PAGE 125

17TH

STREET



(COUNTY OF WEBER)  
121280028  
(CLARENCE P JONES)

SEE PAGE 126

SEE PAGE 128-1